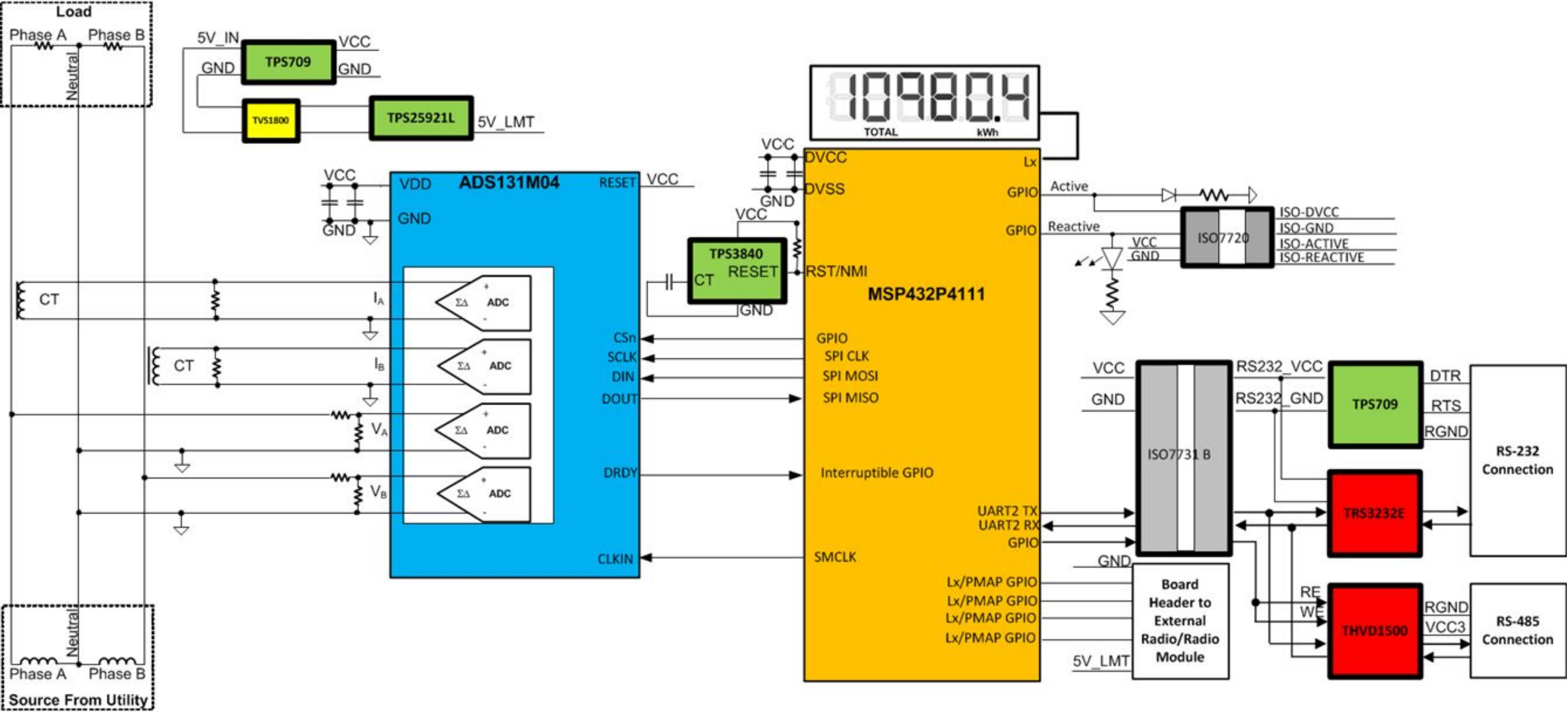
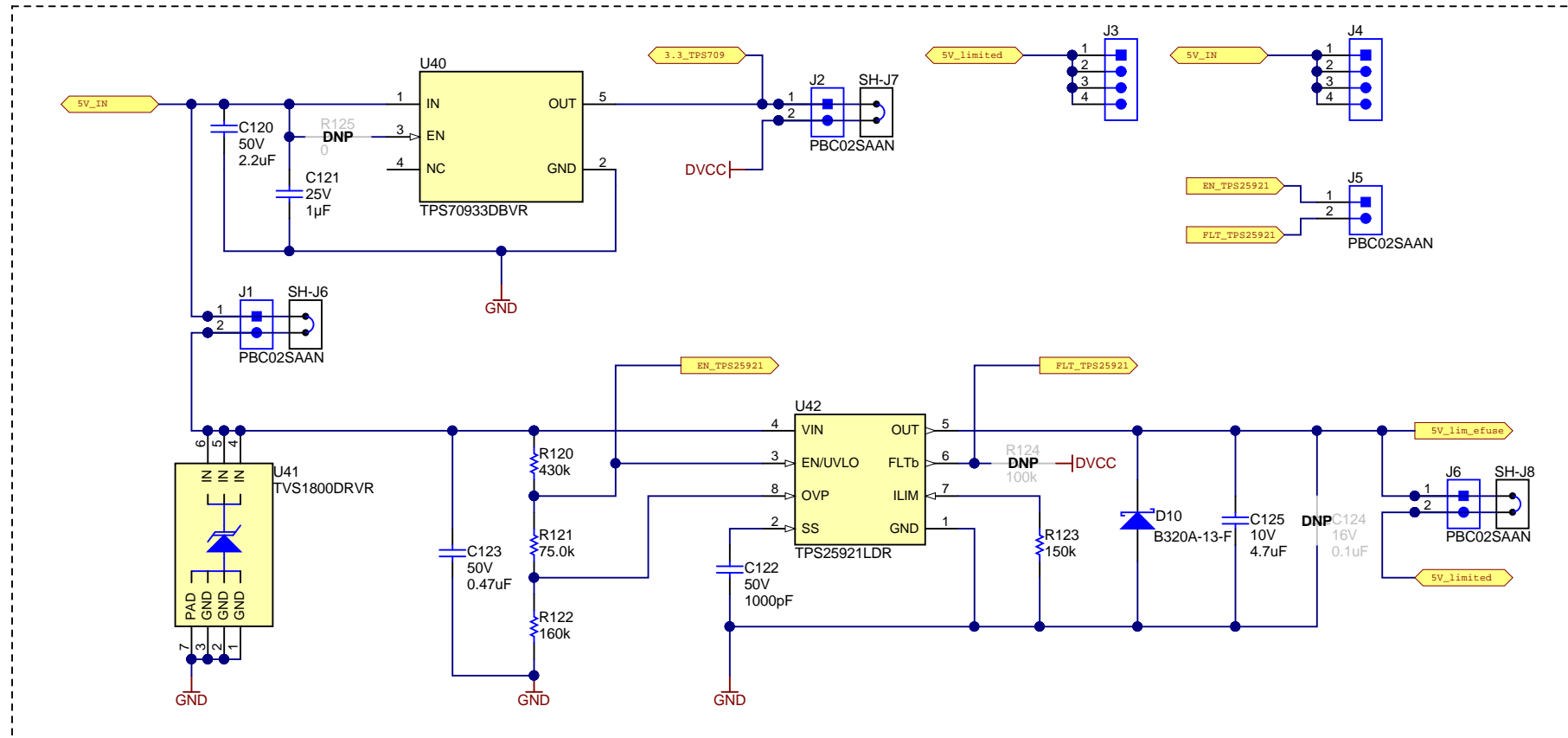


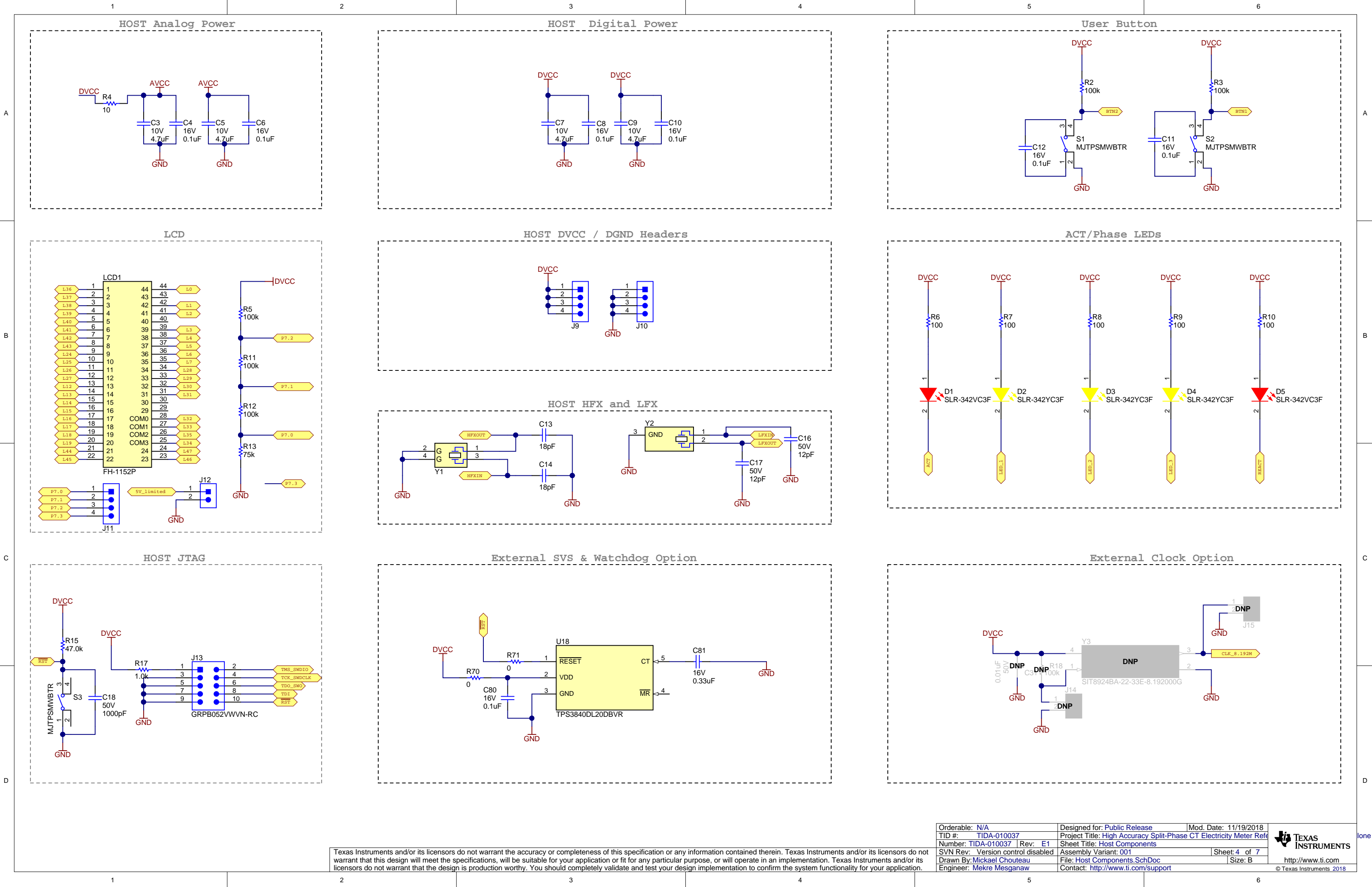
Revision History					
Rev	ECN #	Approved Date	Approved by	Notes	
N/A	N/A	N/A	N/A	N/A	



## 3.3 VCC &amp; Current Limit







A

B

C

D

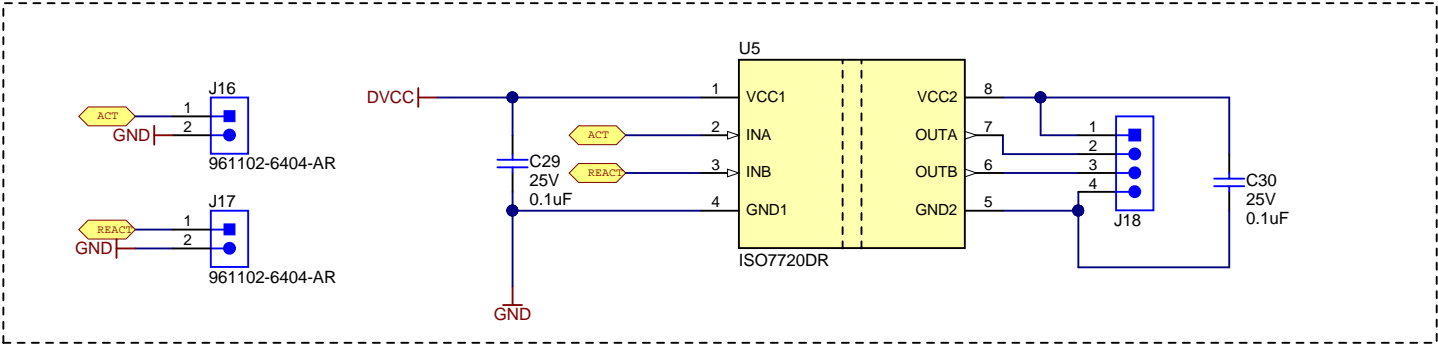
A

B

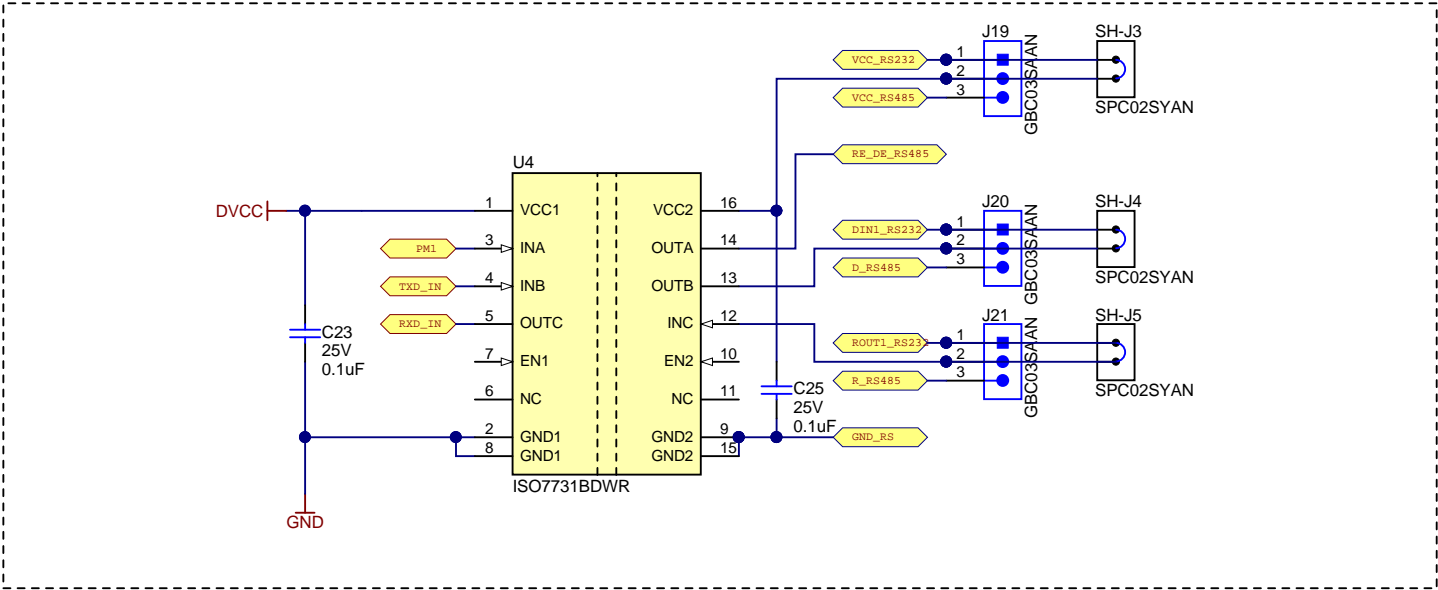
C

D

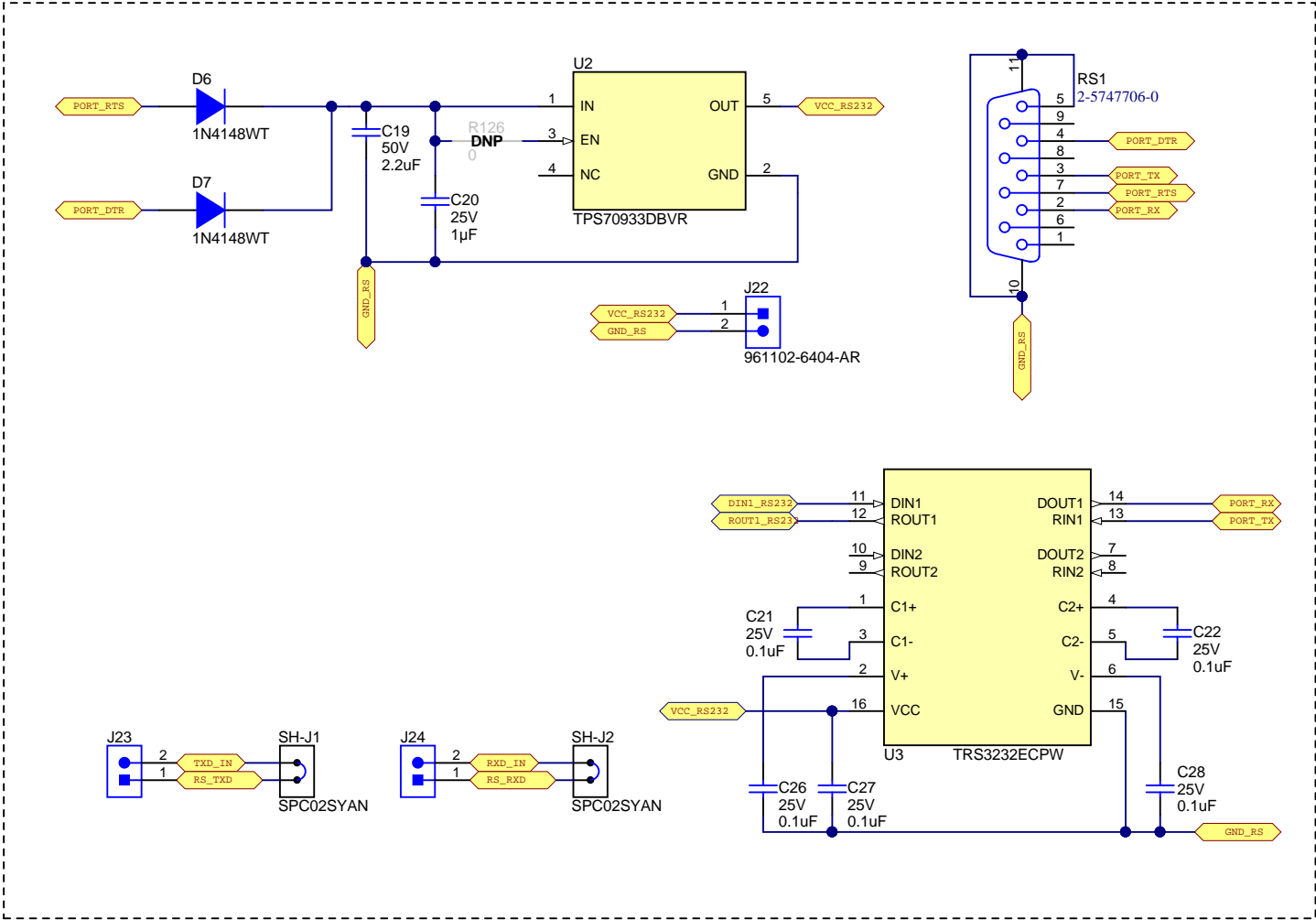
Act / React



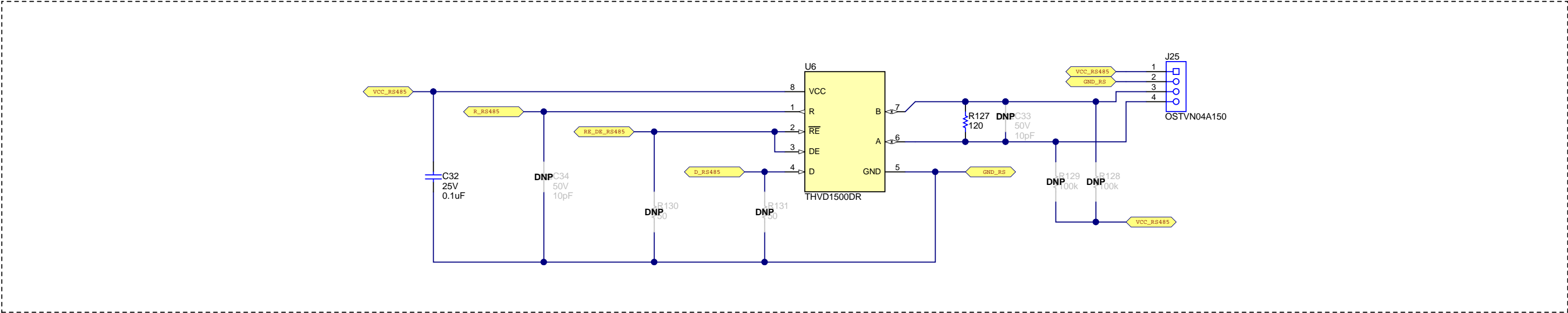
Isolation

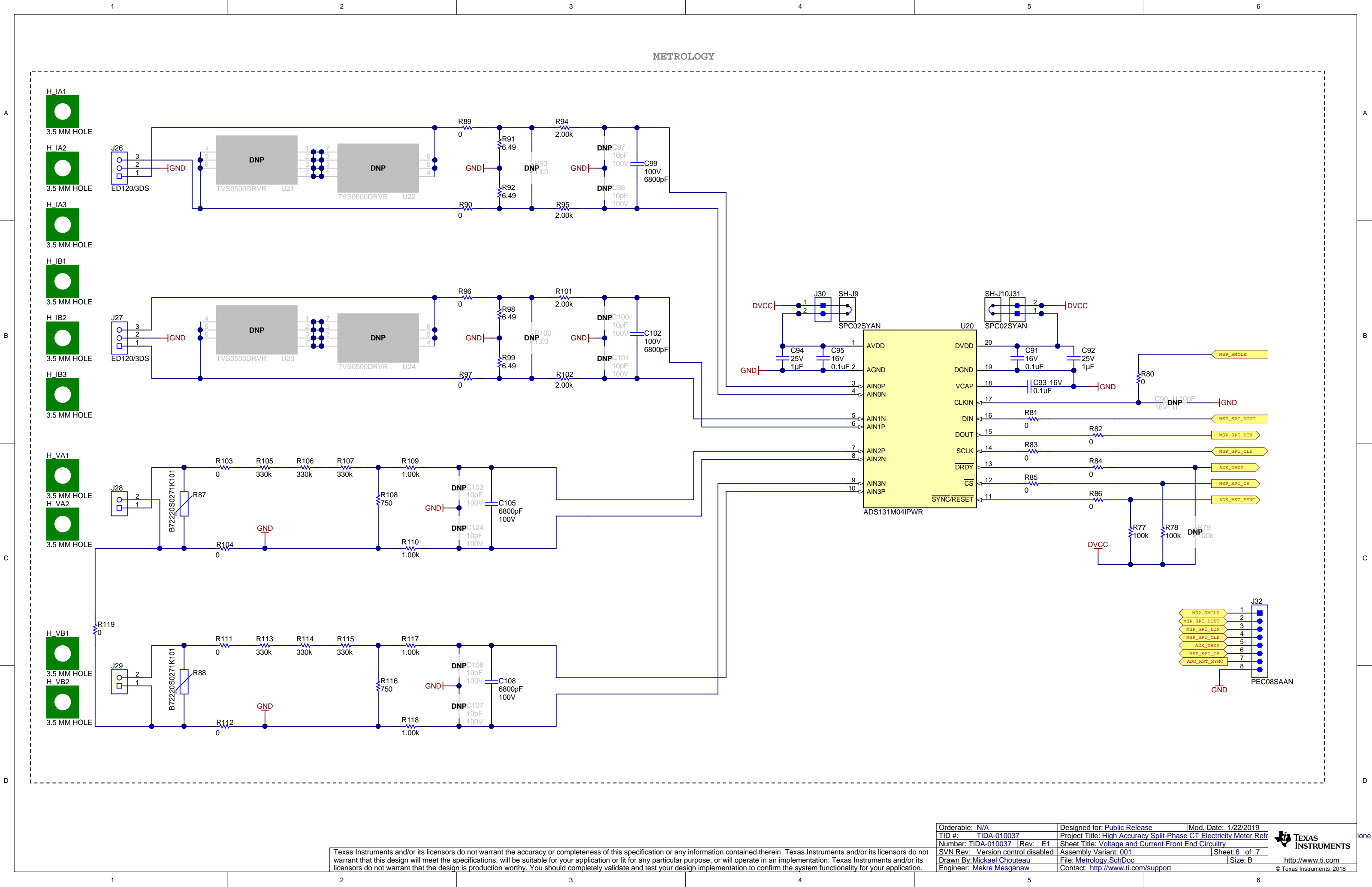


RS232 Communication



RS485 Communication





Texas Instruments and/or its licensors do not warrant the accuracy or completeness of this specification or any information contained therein. Texas Instruments and/or its licensors do not warrant that this design will meet the specifications, will be suitable for your application or fit for any particular purpose, or will operate in an implementation. Texas Instruments and/or its licensors do not warrant that the design is production worthy. You should completely validate and test your design implementation to confirm the system functionality for your application.

Orderable: N/A	Designed for: Public Release	Mod. Date: 1/22/2019
TID #: TIDA-010037	Project Title: High Accuracy Split-Phase CT Electricity Meter Ref	
Number: TIDA-010037	Rev: E1	Sheet Title: Voltage and Current Front End Circuitry
SVN Rev: Version control disabled	Assembly Variant: 001	Sheet: 6 of 7
Drawn By: Mickael Chouteau	File: Metrology.SchDoc	Size: B
Engineer: Mekre Mesganaw	Contact: <a href="http://www.ti.com/support">http://www.ti.com/support</a>	



PCB Number: TIDA-010037

PCB Rev: E1

PCB

LOGO

Pb-Free Symbol

PCB

LOGO

FCC disclaimer



LBL1

PCB Label

THT-14-423-10

Size: 0.65" x 0.20 "

ZZ1

Label Assembly Note

This Assembly Note is for PCB labels only

Variant/Label Table	
Variant	Label Text
001	Default Variant



ZZ2

Assembly Note

These assemblies are ESD sensitive, ESD precautions shall be observed.

ZZ3

Assembly Note

These assemblies must be clean and free from flux and all contaminants. Use of no clean flux is not acceptable.

ZZ4

Assembly Note

These assemblies must comply with workmanship standards IPC-A-610 Class 2, unless otherwise specified.